

A newsletter for Te Arawa descendants on the economic growth and development towards achieving the aspirations of 11 Affiliate iwi and hapu from its Treaty of Waitangi settlement.

Manaaki Whenua, Manaaki Tangata, Haere Whakamua
Care for the land, Care for the people, Go forward

THE CENTRAL NORTH ISLAND STORY SO FAR

On July the 1st 2009, 176,000 hectares of Crown forest lands in the central North Island were returned to Iwi. At that point in time, the Central North Island (CNI) Forest Lands Collective Settlement was the largest Treaty of Waitangi settlement in New Zealand history. The settlement land, the majority of which is part of Kaingaroa Forest estate, is held in Trust on behalf of the CNI Iwi Collective by Central North Island Iwi Holdings Ltd (CNIHIL).

The CNI Iwi Collective

There were a number of Iwi with claims in the CNI Forest lands. During the negotiations with the Crown, the CNI Iwi Collective reached agreement on the percentages of accumulated and future rentals each Iwi would be allocated. The CNI Iwi also agreed to a process that would determine who had mana whenua over which block of forest lands and therefore should eventually receive that land.

There are eight Iwi groups that make up the CNI Iwi Collective. They are Te Pumautanga O Te Arawa Trust (representing eleven Te Arawa Iwi and Hapu), Ngai Tuhoe, Ngati Manawa, Ngati Tuwharetoa, Ngati Whakaue, Ngati Rangitahi, Ngati Whare and Raukawa.

The CNIHIL has sixteen Board members representing the eight CNI Iwi groups. There is also a Crown representative with special observer status who together with the Iwi representatives makes up the Board of Directors for CNIHIL. Matt Te Pou from Tuhoe Te Uru Taumata Trust is the current elected chairperson. CNIHIL has offices in Rotorua with three staff that manage the day to day running of the office.

The CNI Iwi have each established management structures to receive their share of the settlement. These post-settlement Governance entities (PSGEs) are mandated to represent the interests of beneficiaries. Each PSGE will decide how they might invest or use their share of the settlement revenue i.e. if and how they might participate in future Collective commercial activities. The CNI Iwi Collective's main role is to

story continued on page 4



One of the Crown forests awarded to Te Pumautanga O Te Arawa and the Central North Island (CNI) Collective. This is part of the Tokorangi Block, one of many forestry blocks in the Bay of Plenty awarded to the CNI Iwi Collective.

INSIDE

2. He Aitua - He Poroporoaki 3. From the Chair 3. Web Design Workshops 4. The CNI Story So Far - Continued 6. Registrations 7. Panui Poto - Te Arawa Marae Expo 2012

He Aitua - He Poroporoaki



Profile

Born Dennis Tuimanua Polamalu on 9th August 1941. On his fathers side he was of Samoan descent, from the village of Masina in the district of Fagaloa on the island of Upolu. On his mother's side, he is New Zealand Maori. Born at Te Kahika, Te Puke in the Bay of Plenty.

His principle maraes are Tarimano of Ngati Rangiwewehi and Mataikotare of Ngati Rangiteaorere. By whakapapa his affiliations are to Ngati Tuteniu, Ngati Uenukukopako, Ngati Te Roro-o-te-rangi, Ngati Makino, Ngati Pikiao, Ngati Tarawhai and Ngati Whakahemo.

He was educated at Maketu Primary School, Rotokawa Native School, Rotorua Boys and Girls High School and Temple-view College, Hamilton, He also attended Waikato University and Te Wananga o Raukawa.

He held a Bachelor of Arts with Honours, Bachelor of Education and Diploma in Business Management.

His experience with Te Pumautanga o Te Arawa Trust started when he joined the staff of Nga Kaihautu O Te Arawa on 23rd May 2004. He was contracted by the Kaihautu Executive Council (KEC) to head low level research on land claims lodged against the Crown by Affiliate Iwi and Hapu KEC members, of which Ngati Tuteniu was one. When employed by Nga Kaihautu O Te Arawa, the organisation had already been mandated by 17 Iwi and Hapu of Te Arawa to progress land claims.

At right. A sample of Dennis' final web page layouts as part of the Web Design Workshop held recently at Te Pumautanga's offices.

Dennis Polamalu died suddenly in his home at Rotokawa on Sunday 2 September 2012. He represented Ngati Tuteniu on the board of Te Pumautanga o Te Arawa.

In 2003 Nga Kaihautu o Te Arawa Executive Council (NKoTAEC) was established, following the signing of the Terms of Negotiation in 2004, Dennis worked as a researcher collating historical material for the negotiators. He later worked for Te Pumautanga o Te Arawa as their registration officer and his continued contribution to the future of our organisation was invaluable.

Dennis had a vision of achieving self-sufficiency for his people and offered valuable business experience. He had a Diploma in Business Management and was involved in tourism in Rotorua. He had also been involved in the negotiation of several Treaty claims. In 2008 he joined the Ngati Rangiwewehi land claims team where he recently worked as a researcher and negotiator. Dennis' also had a Bachelor of Arts with Honours.

This gentleman who may have been small in stature was large in presence within the organisations that he represented.

He always spoke passionately of Ngati Tuteniu and the vision he had for them. His passion was shown by his 'courage' to learn to do a website for his beloved Iwi. Courage, because even though he doubted his own skills, he decided that the resulting outcome would far outweigh the journey it took to get there. He got there. A striking design that we hope would one day grace the pages of the internet.

His fortitude was undeniable and passion indisputable.



FROM THE CHAIR

Tenei te mihi atu kia koutou nga kawai nui o nga kahui rangatira. Tena koutou e noho mai ra i runga i o tatau marae maha huri noa i nga motu e toru e takoto ake nei. E haere tonu ana a matau mahi hei painga mo tatau e noho ana i raro i te maru o Te Pumautanga o Te Arawa. E whai ake nei ko nga whakamaramatanga.

Te Puhi o Te Arawa e

Te Takere o te waka e

Tikoki taea te unu o te kiato o te waka.

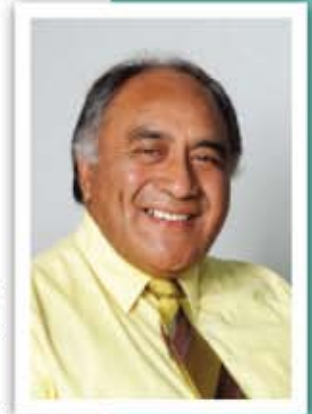
Ka totohu tonu, ka totohu tonu.

Taku mapihi kahurangi, kei te hahae te tau o te ate, kei te hotu te whatumanawa, kei te patuki te tarauma, kei te moteatea nga mahara mou, kua huri kaweka nei.

Whai ake nei i nga tapuwae o te hunga rongonui, ratau i haere i mua atu i a koe, ara, a Edwin, a Pohowaiki, a Mita, a Pinder, otira, ratau ma e ngakautia ana ki te kaupapa o Te Pumautanga o Te Arawa. E haere ana koe ki te Whare Takiura o Te Waiariki, me te Wananga o Waikato ki te whakaki ake to kete matauranga, ko te mutunga iho i tutuki pai ai o moemoea. Haere e te tangata humarie, haere e te tangata puku mahi, piki atu koe i runga i o maunga korero kia hurihia to mata ki nga hau e wha kia kitea atu koe to iwi e tangi aruaru ana mou, haere ki te kainga tuturu mo taua te tangata, moe mai ra, moe mai ra e moe. Ka apiti hono, tatai hono koutou te hunga wairua ki a koutou, ko tatau tenei nga mahuetanga iho o ratau, tihe mauriora.

Eru George

Te Pumautanga O Te Arawa Trust Chairperson



WEB DESIGN WORKSHOPS

Some Te Pumautanga Affiliate entities took the opportunity to attend a web design course provided by Te Pumautanga earlier this year. The course provided them with the technical skills and know how to develop a website from scratch. Regular updating and routine maintenance will be required to maintain the flow of information to the associated beneficiaries.

Design tutor Roland Kingi said the benefits for the Affiliate entities are threefold. "The Trust becomes the web designer, controls the content of their web page(s) and ultimately saves on the cost of outsourcing this work. They will have total control of their web sites."

Dennis Polamalu, a Te Pumautanga O Te Arawa Trustee and Ngati Tuteniu Iwi Affiliate Trust

participated on the programme. On the completion of the course he met with fellow Ngati Tuteniu Trustees to show off his near finished product. He said they were rapt with it and were keen to see it going online soon. Dennis said that it was only the content that needed to be finalized before taking the next step. Uploading to the site and releasing it to the world.

'This will be a good way to get our stories out. We can tell our history and stories of the people who were influential within our Hapu' said Dennis.

But more importantly this will help them stay in contact and provide specific information to their hapu members. Other Iwi Affiliates involved in the programme also produced some very good websites. We hope to see some their work on the net soon.

The Central North Island Story - Continued



Rawiri Te Whare, one of two Te Pumautanga O Te Arawa representatives on the CNI Iwi Holdings Board

ensure that Iwi have the option to participate if they so choose, now and in the future.

The PSGEs have set up as legal entities, governed by elected representatives in accordance with the PSGE's constitution. Each constitution must have complied with the principles of good governance and the minimum requirements of the Crown. CNI Iwi have developed constitutions to suit their own distinctive requirements in accordance with their tikanga and kawa.

PSGEs are intended to hold settlement assets on behalf of their beneficiaries. People who can demonstrate their whakapapa back to that Iwi can register as a beneficiary of that PSGE.

The CNI Mana Whenua Process

The CNI Forest Lands Collective Settlement was negotiated by the CNI Iwi Collective and the Crown. The CNI Mana Whenua process was intended for the CNI Iwi themselves to determine which areas of the returned land would rightfully belong to whom. This is unique in settlements in that this is the first time the Crown is not directly involved in the final allocation of these lands.

The forest land were transferred to CNIHL in July 2009. The CNI Iwi Collective gave itself a two year time frame to determine through a tikanga based process the respective mana whenua interests over that land. This was known as the mana whenua process. Unfortunately The Collective failed to complete the process within the allotted time frame.

The CNI Iwi Collective have agreed to extend the time frame for the mana whenua process 30 June 2013. CNI Iwi are currently engaged in kanohi ki te kanohi meetings to try and reach agreement on the mana whenua for each block of forest lands.

The mana whenua process is be monitored and supported the CNIHL. There are three stages that progress through to a Final Allocation Agreement:

Stage 1: Identification of claimed mana whenua interests

Stage 2: Kanohi ki te kanohi Negotiation

Stage 3: Adjudication process to determine a Final Allocation

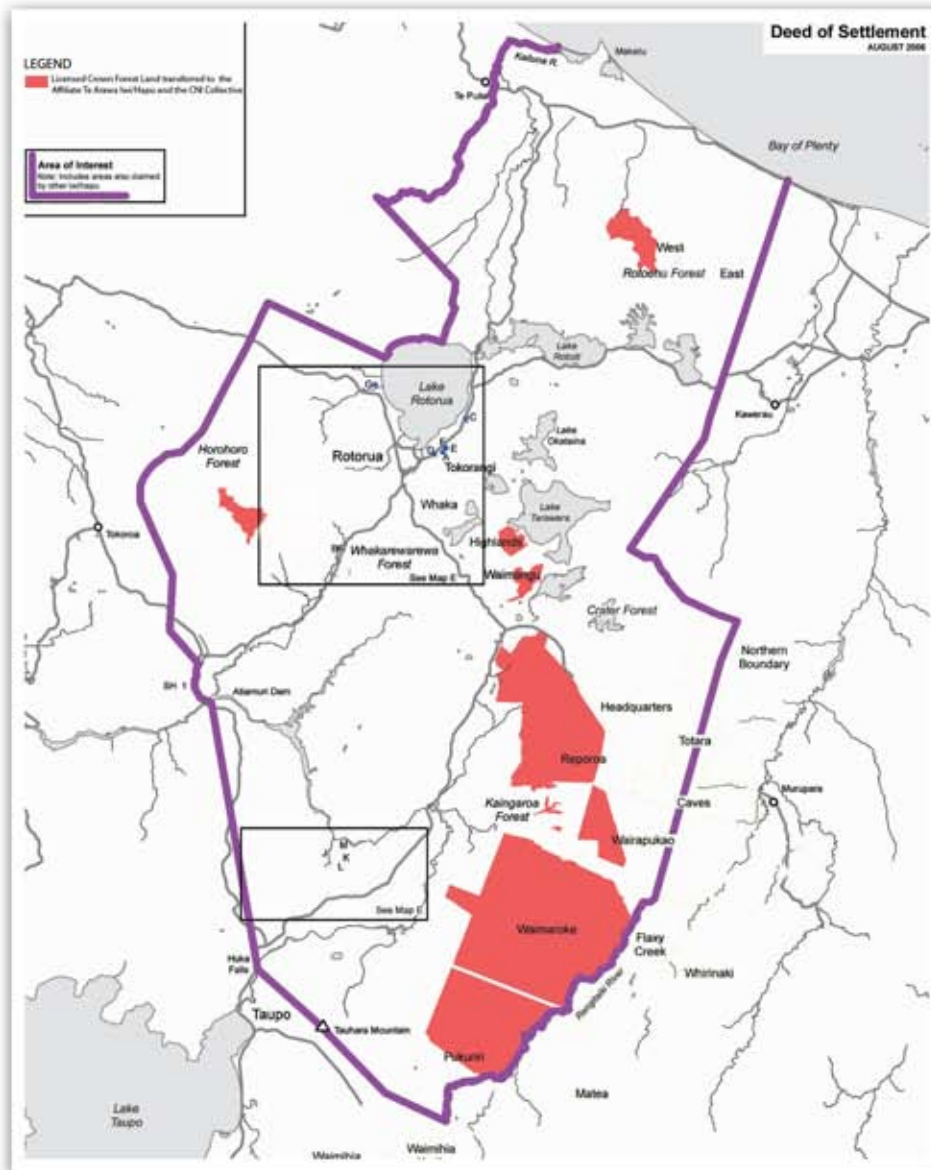
Although technically in stage 3, the CNI Iwi have mutually agreed to continue with the stage 2 phase at the same time as stage 3 is underway. It is hoped that Iwi can mutually agree to an outcome that can then be included in the Final Allocation. Therefore only disputed lands need go to the independent Adjudication Panel for a decision.

Central North Island Holdings Limited (CNIHL)

CNI Iwi Holdings Ltd holds the CNI forest lands returned under the settlement in trust and on behalf of the 8 CNI Iwi. It is intended that CNIHL will continue to hold that land for up to 35 years or 2044. During that time each CNI Iwi will receive revenue from the ongoing rentals paid by the forest owners, in accordance with the agreed percentage allocations. TPT's percentage allocation is 15.625%. The key functions of CNI Iwi Holdings Ltd are:

1. To receive the settlement assets,
2. To distribute the settlement assets and any ongoing revenue from those assets (including ongoing licence fees paid under the Crown Forest Licences (CFLs)), and
3. To safeguard the land and assets and ensure that they are not at risk.

CNIHL is a trust holding entity. It is not a commercial company and has no commercial functions. It is run according to a Trust Deed and Shareholders Agreement and is governed by a Board of Directors. The eight CNI Iwi are all equal shareholders of CNIHL and may each appoint two Directors to the Board. The Crown is also represented on the Board with the Crown representative having a special observer status. The Crown representative's role is to protect



Map showing areas awarded in the CNI Forest Lands Collective to Te Pūmāutanga O Te Arawa and the CNI Iwi Collective. The lands that were awarded are made up of forests in the Rotoehu, Horohoro - Oturoa, and Whaka forests. The majority of the land interests are in the Kaingaroa Forest.

In July 2009, when the 176,000 of Crown forest lands were awarded to the Collective, the Central North Island (CNI) Forest Lands Collective Settlement was the largest Treaty of Waitangi settlement in New Zealand history.

the interests of Iwi sitting outside the CNI Iwi Collective but having claims into the Crown forest licensed lands. The Crown shareholding is known as the Crown Agreed Proportion and equates to 10% in value of the central North Island forest lands.

Non-CNI Iwi Collective such as Ngāti Rangiwēhē and Ngāti Hīneuru continue to progress their negotiations towards settlement with the Crown, including claims over CFL lands. Once all such claims are settled, any land remaining out of the Crown's 10% can be purchased by the CNI Iwi Collective. As the claims of these other Iwi are settled, the successful Iwi will, with the agreement of the existing shareholders, have the option of becoming shareholders in CNIHL.

The key role of CNIHL's Directors is to ensure that CNIHL, as Trustee, acts in the best interest of the CNI Iwi Collective's beneficiaries. CNIHL has delegated land management responsibilities to Tukia Group Limited through a Land Management Agreement. CNIHL monitors the performance of Tukia Group as Land Manager. Tukia Group also investigates other commercial opportunities and may make recommendation to the CNIHL Board of Directors.

This includes advice with respect to the New Zealand Units (NZUs or "carbon credits") under the New Zealand Emissions Trading Scheme associated with the settlement lands. The CNI Iwi Collective has also secured preferential rights to buy certain Crown properties should they prove to be of economic benefit to the Collective.

Te Pumautanga O Te Arawa Registrations

Registrations

Registrations form an integral part of the operation of Te Pumautanga O Te Arawa. The Beneficiary Register is a database of members who whakapapa to one or more of the Affiliates. Te Pumautanga has around 12,000 current registrations.

Because some of our people are always on the move, people sometimes forget to update their details. This is certainly true for Te Pumautanga O Te Arawa. We have found this with each issue of the Korero and the number of newsletter returns we received from people no longer residing at that address.

So if you're planning to move anytime in the near future and are registered with Te Pumautanga, please call or write to us so that we can update your details. And if you know of anyone who is registered and has moved on, remind them to contact us.

Email is good way to stay in contact with Te Pumautanga to update your details. Our contacts can be found on the back cover of this Korero. We can also provide you with the link to the website where a copy of the registration form can be downloaded and filled out. We still need the hardcopy of the registration form as this needs to be signed in the applicants own handwriting. A Freepost address is provided. Previous and future issues of the Korero will be available on the website and downloaded for you to read at your leisure.

If you have any queries about registrations you can contact the Registrations Officer at the office or you can email nero2@tpota.org.



Trustee Elections

Trustee Elections to the Affiliate Entities and subsequently to the Te Pumautanga Board are scheduled in early 2013. With these elections, it is crucial that all those wishing to participate are registered with Te Pumautanga O Te Arawa. If you are not registered, you should register as soon as possible to ensure your registration validated by the close of registrations. The date for the closing of registrations will be notified to all registered beneficiaries and published in the next issue of the Korero and on the Te Pumautanga O Te Arawa website.

Contact details can be found on the back cover of this Korero.

Hunting Permits

Hunters can benefit from being registered with Te Pumautanga O Te Arawa Trust or any of the 8 CNI Iwi. By being registered with Te Pumautanga, hunters are able to have any fee associated with their permit application, waived. This applies to the Kaingaroa and Rotoehu Forests at this time. You will need to check for any additional conditions applying to either forest.

Permit application forms can be picked up from Independent Security Consultants Limited (ISCL) on 66 Tarewa Road, Rotorua. You will also need to fill out a Landowner Registration Form which is also available at ISCL. The Landowner Registration Form needs to be signed off by any one of the authorised CNI Iwi listed on the application. You are also required to provide a copy of a driver license, firearms license and vehicle registration, make and model.

Hunting without a permit and failing to adhering to the Forest Manager's conditions of access may result in a Trespass Notice being issued and a ban from entering the forest for a two year period. This year's hunting and fishing season is from the 6 April 2012 through to 30 September 2012. The forests are closed to recreational hunters outside of the hunting season.

Registration forms are available from the office or online on the Te Pumautanga O Te Arawa website

NGA PANUI POTO

MARAE EXPO 2012



The 2012 Marae Expo held at Te Papaouru Marae, Ohinemutu on Friday the 6th July opened with a karakia inside Tamatekapua. The tupuna whare Tamatekapua, the dining hall Whakaturia and the Saint Faiths ancillary building Te Aomarama were used to house the various expo booths and displays.

The purpose of the Expo was to establish networks and support structures between Marae in the Rotorua area, and major retailers and distributors. The objective of the Expo was to support the ongoing management and protection of Te Arawa Marae for future generations. Invitations to this first Marae Expo were sent to Marae throughout the Bay of Plenty region.

The Expo is the brainchild of a group of government agencies, public service providers and Iwi organisations who together formed the Expo Marae Committee. This committee includes:

- Te Puni Kokiri
- NZ Fire Service
- Te Papa Takaro O Te Arawa
- Maori Land Court
- Historic Places Trust
- Department of Internal Affairs
- Inland Revenue

A key factor for the success of this occasion was the informative sessions that were programmed throughout the day. Presentations by government departments and high profile organisations were well attended.

Speakers provided information about their organisations and products throughout the day. The question and answer sessions that followed were always engaging with people wanting to know more. The catering and foodstuff products were as expected, very popular with the attendees.

This event was hugely successful and well attended with big numbers through the doors. There were many positive comments about the event passed on to the Te Pumautanga booth. The organisers' hope is that this Expo becomes an annual event. Future Expos may be held during Matariki. Congratulations are extended to the Marae Expo Coordinator Lisa Mansell and the team from Te Papa Takaro O Te Arawa for hosting the event. Hopes are high that the event will be held again next year.

In the next Issue of Te Pumautanga Korero

Ngati Rongomai

Ngati Rongomai has started their long awaited renovation work on their Marae, Nga Pumanawa E Waru at Ruato Bay, Rotoiti. We talk to the Trustees about the restoration of their taonga.

Ngati Uenukukopako

Ngati Uenukukopako has invested in the Airport Hotel out on Te Ngae Road opposite the airport and next to Rotokawa School. The Affiliate Iwi Trust sees it as a long term investment for their Trust providing rental accommodation their people. Te Pumautanga Korero talks to the Trust about their vision for Ngati Uenukukopako.

Youth Court - Marae Justice

Opening in April of this year Te Arawa now has our own Marae Youth Court based at Taharangi Marae on Tarewa Road in Rotorua. This is the tenth Marae Youth Court to be established in the country and goes a long way to meeting the needs of whanau.

CONTACT DETAILS

Te Pumautanga O Te Arawa Board of Trustees



Eru George
Ngati Tuara/Ngati Kearoa
027 4733 582
erug@xtra.co.nz



Wallace Haumaha
Ngati Ngararanui
(04) 477 2589
027 275 7572
haumaha@xtra.co.nz



Takarei Te Tamaki
Ngati Tura/Ngati Te Ngakau
(07) 347 8217
029 245 0437
tetamaki@xtra.co.nz



Clark Pirika
Ngati Te Roro o te Rangi
(07) 349 6563
027 545 4389
Clark.Pirika@rdc.govt.nz



Donna Te Kanawa
Ngati Uenukukopako
(07) 345 5703
tekanawa@slingshot.co.nz



Angela Werahiko
Ngati Tahu-Ngati Whaoa
(07) 333 8738
027 499 1596
angela@tahu-whaoa.com



Taria Tahana
Ngati Pikiao
(07) 343 6266
021 463 065
taria@tahana.com



Davey Gardiner
Ngati Pikiao
(07) 362 7606
henareg@xtra.co.nz



William Emery
Ngati Pikiao
(07) 362 7737
027 224 6081
willie.emery@gmail.com



Ruka Hughes
Ngati Rongomai
(07) 362 7006
027 296 9425
hughr@tpk.govt.nz



Manu Malcolm
Ngati Tarawhai
(07) 357 5500
027 226 4115
manumalcolm@mined.govt.nz



Warwick Morehu
Tuhourangi Ngati Wahiao
(07) 315 6162
027 286 7875
warwick.morehu@police.govt.nz



Te Rangipuwhe Maika
Tuhourangi Ngati Wahiao
(07) 347 1624
021 120 9233
rang.maika@xtra.co.nz



Victoria Werohia
Tuhourangi Ngati Wahiao
027 489 9177
victoria.werohia@gmail.com



Ngati Tuteniu
To Be Advised

www.tpota.org.nz

The website for Te Pumautanga O Te Arawa Trust has been updated. To learn about our organisation, our history, and Treaty settlement visit our website at www.tpota.org.nz



Pumautanga Kōrero is a quarterly newsletter published by Te Pumautanga O Te Arawa Trust. *Pumautanga Kōrero* aims to inform Te Arawa descendants on the economic growth and development of the 11 Te Arawa Affiliates entitled to benefit from the Te Arawa Affiliate Iwi and Hapu Settlement.

For all editorial inquiries please contact:

Te Pumautanga O Te Arawa Trust
1 Peace Street, PO Box 6084, Rotorua 3043

Telephone (07) 347 4615
Fax (07) 347 4654
Free phone 0800 524 428 (New Zealand)
Free phone 1800 237 527 (Australia)

Email: tpota@xtra.co.nz
Website: www.tpota.org.nz

E-News

To receive our newsletters by email, please contact us during office hours. Kia ora!

